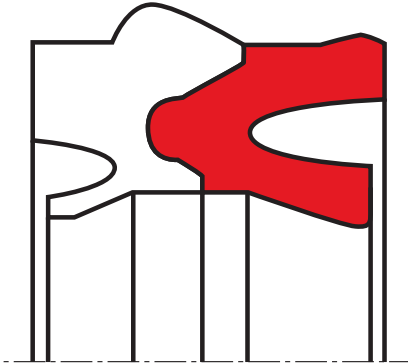


wiper A66

seal spec



description

the self-retaining pneumatic rod seal/wiper set profile A66 for piston rods in pneumatic cylinders combines three functions sealing, wiping, fixing.

application



category of profile

machined or molded/standard/trade product.

double acting

area of application: pneumatic

medium: lubricated air as well as dry air and oil-free air (after initial lubrication on assembly).

advantages

- no danger of corrosion as the combined fixing/scraping part renders additional circlips etc. unnecessary.
- no dust corners thanks to the special design of the wiper lip area.
- if one scraper only is required (for example in case of single-acting cylinders), the fixing/scraping part profile may be used without the sealing part. modification of the housing is not required.
- favorable friction values and long service life due to special compound and lip geometry of the sealing part but also because of highly wear resistant plastic material used for the fixing part.
- the profile A66 rod seal/wiper set may also be used for dry air and oil-free air after initial lubrication on assembly (essential for long service life).
- can be easily replaced even with piston rod installed.

operating parameters & material

| material | temperature | running surface speed | max. pressure |
|---|------------------|-----------------------|------------------|
| NBR-based with a hardness of approx. 80 Shore A | -20°C ... + 80°C | ≤ 1.0 m/s | 1.6 MPa (16 bar) |

the stated operation conditions represent general indications. it is recommended not to use all maximum values simultaneously. surface speed limits apply only to the presence of adequate lubrication film.

surface quality

| surface roughness | Rtmax (µm) | Ra (µm) |
|-------------------|------------------------|---------|
| sliding surface | according to seal data | |
| bottom of groove | ≤ 6.3 | ≤ 1.6 |
| groove face | ≤ 15 | ≤ 4.0 |

**tolerance recommendation****seal housing tolerances**

| | |
|-----------------|-----|
| $\varnothing d$ | e9 |
| $\varnothing D$ | H10 |

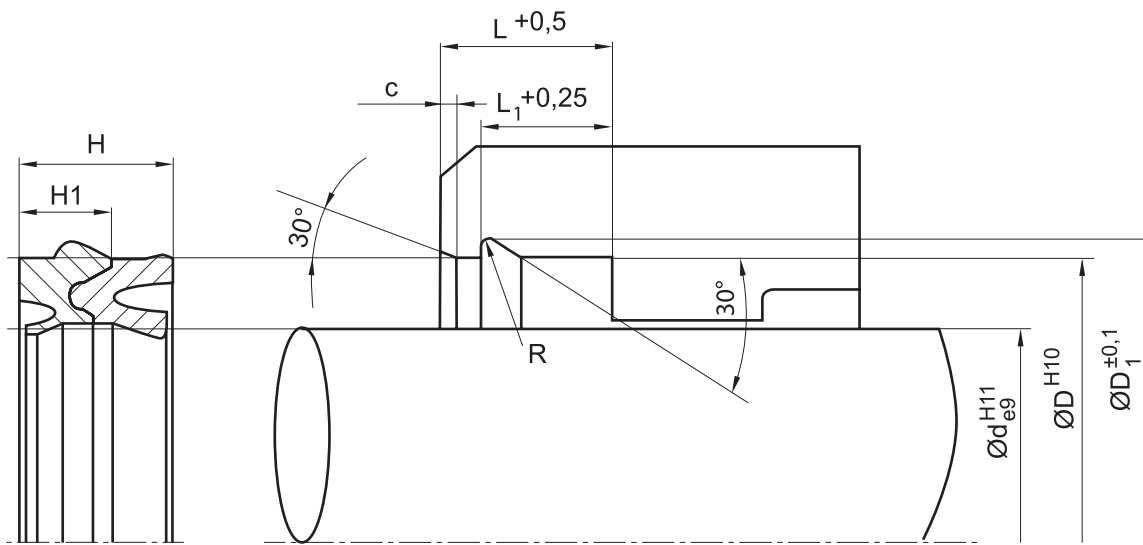
fitting & installation/dismantling:

the pneumatic profile A66 rod seal/wiper set is fitted into the housing by means of a circlip recess according to DIN 7993 (type B). the sealing part is pushed in and fixed by the retainer/wiper, which snaps in easily. during assembly, care should be taken to ensure that neither the scraper nor the sealing lips be damaged by sharp edges.

in case the seal/wiper set needs to be exchanged, this can be accomplished without removing the piston rod if a dismantling recess has been provided for.

seal & housing recommendations

please note that we are able to produce those profiles to your specific need or any non standard housing. for detail measurements, please see seal-mart catalog...



don't hesitate to contact our technical department for further information or for special requirements (temperature, speed etc.), so that suitable materials and/or designs can be recommended.